

Tees, Esk and Wear Valleys
NHS Trust



Foundation Trust Status

The future

Why Foundation Trust Status?

- Enables the Trust Strategic Direction
- New Environment
 - Commissioning – Leadership Role
 - Market & Competition
 - Paid for what we do
 - Focus upon Wellbeing
 - Voice & Choice for Patients
 - Freedom for Staff

What is a foundation trust?

- Part of the NHS “family”
- Membership organisations - more accountable to local people
- Greater autonomy to manage their own affairs and money

What do we need to do to become an FT?

Getting FT status is a challenging process and to be successful we must be able to demonstrate to Monitor that we have:

- Achieved CNST level 1
- An agreed five year business plan
- Robust financial arrangements
- Consulted widely on our constitution and business plan
- A system for recruiting members.

The benefits

- Governance
 - Members can help to influence how the trust develops
 - Greater accountability
- Greater opportunities for partnership working
- Greater financial freedom

The future for Tees, Esk and Wear Valleys NHS Trust

- Achieving FT status is Government policy
- TEWV Trust Board believes FT status will help it achieve its strategic direction
- April 2008 – target date to become an FT

How FTs operate

Unlike NHS Trusts, FTs are accountable to their membership so they have new ways of working. The three main legally required components are:

- Membership of an FT
- Board or Council of Governors
- Board of Directors

Each FT has the freedom to decide how these three components are made up after consulting with its service users, carers, staff, partners and local people.

Categories of Membership

The Public Constituency

- Open to anyone over the age of 14 years who lives in the areas we serve.
- Members will be grouped depending on where they live.
- Can be subdivided into Public, Users & Carers
- Public places based on the population size.

Categories of Membership

The Staff Constituency

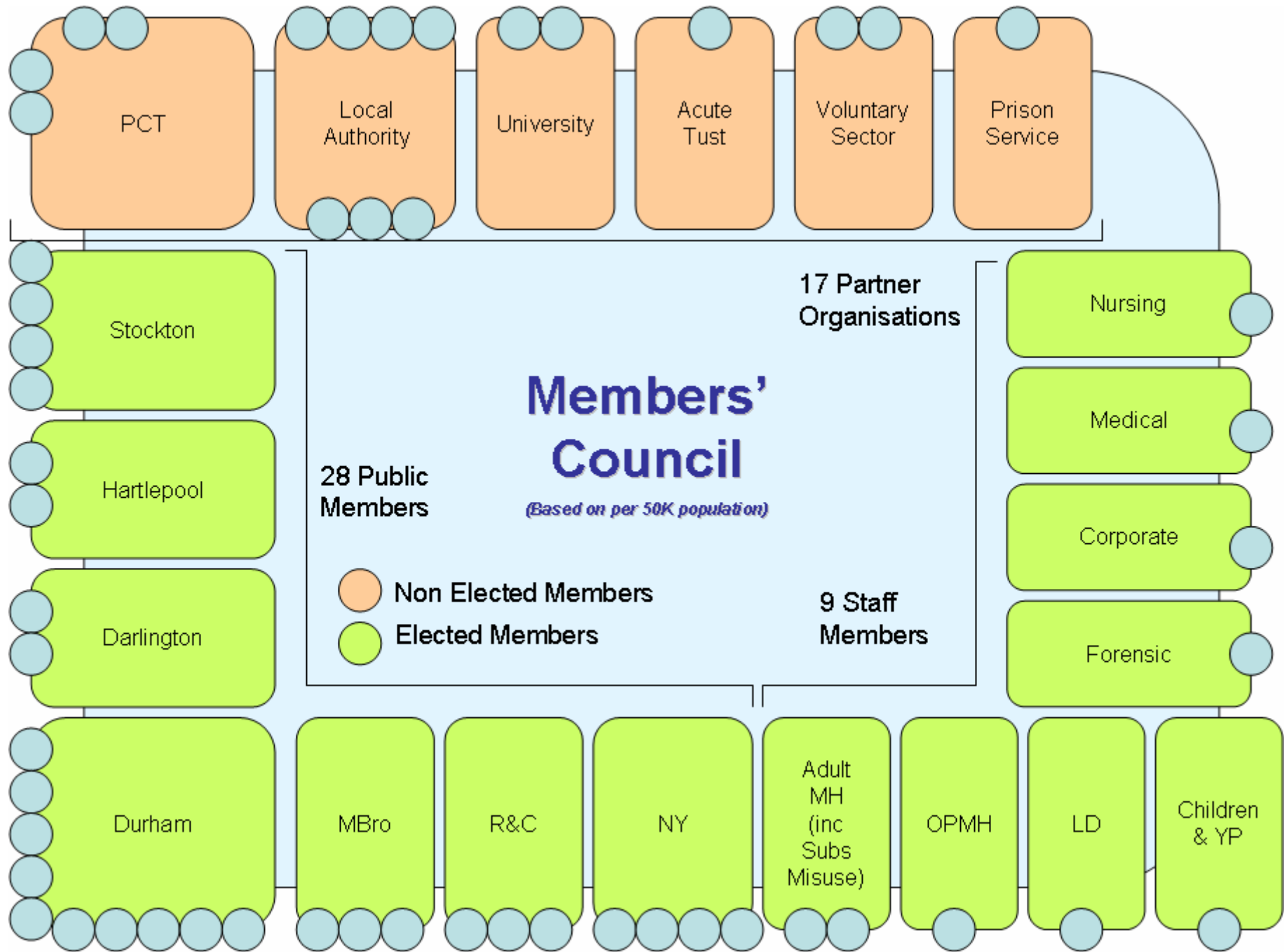
Subdivided into 8 groups, called classes, as follows:

- Adult Mental Health (inc. Substance Misuse)
- Older Persons MH Services
- Children & YP Services
- Learning Disability Services
- Forensic Services
- Corporate Services
- Medical
- Nursing

Categories of Membership

Members' Council of Governors

- Advisory Role to the Trust Board
- Elected Members (over the age of 16 years)
- Non-elected Members (Appointed members from key local partner organisations)



Discussion/Questions

This page is intentionally left blank